

2000

# American Sign Language video dictionary and inflection guide

Poor Geoffrey

Follow this and additional works at: <http://scholarworks.rit.edu/other>

---

## Recommended Citation

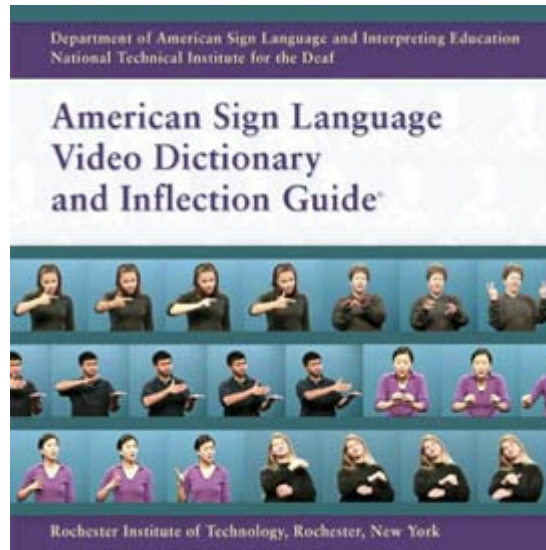
Geoffrey, Poor, "American Sign Language video dictionary and inflection guide" (2000). Accessed from <http://scholarworks.rit.edu/other/777>

This Scholarly Blog, Podcast or Website is brought to you for free and open access by RIT Scholar Works. It has been accepted for inclusion in Presentations and other scholarship by an authorized administrator of RIT Scholar Works. For more information, please contact [ritscholarworks@rit.edu](mailto:ritscholarworks@rit.edu).

# Dictionary and Inflection

[Prospective Students](#)
[Current Students](#)
[Parents](#)
[Alumni](#)
[Faculty/Staff](#)
[Employers](#)
[Friends/Sup](#)

## Dictionary and Inflection Guide

[About](#)
[Feedback](#)
[Purchasing Info](#)
[Testimonials](#)
[Watch a Demo](#)
[Order Now!](#)


## Why is this ASL dictionary different?

This is the first and only product that links thousands of signs to sentences that show how inflection is critical because unlike English words, ASL signs change - inflect - from sentence to sentence to have different meanings. The sign for help, for example, can change to mean help me, help this time, etc. The experts at RIT's National Technical Institute for the Deaf have developed a dictionary that not only shows you 2,700 signs, but shows most of them in sentences. You can learn inflections and learn how they work to help gain a true understanding of the language and its vocabulary.

### Features

- 2,700 ASL signs and English equivalents
- 2,000 signs linked to at least one of 650 sentences that illustrate how the signs have different meanings
- English translations of sentences
- Similar Signs -- signs that look alike -- are separately grouped for easy comparison
- All signs and sentences performed by Deaf native signers in high quality QuickTime
- Various options for viewing the sentences: ASL first, English second; English first, ASL second; simultaneously; and various default and replay options for order of presentation
- Both print (CD booklet) and on-line Help files.
- An on-line text section that discusses both ASL inflection and ASL sentence structure with examples.

- Works on both Macintosh and Windows platforms.
- 1,000 signs grouped into 26 categories:

Countries	States	Cities
Government	Money	Numbers
Numbers (time)	Numbers (age)	Numbers
Animals	Transportation	Alcohol
Food	Furniture	Sports
Bath	Clothing	Careers
Religions	Disabilities	Classifier
Idiomatic Signs	Lexicalized Fingerspelling	12 Step P.
Socially Restricted*	Substance Abuse*	

\*Socially Restricted and Substance Abuse categories are password-protected, preventing younger children.

### Potential Users

- Elementary through high school and college ASL students
- Vocational rehabilitation and other counselors
- Interpreting students
- Families of deaf children
- Deaf people improving their English
- Teachers and school staff
- Other social service workers
- Day care staff
- Anyone who wants to learn ASL

Major funding provided by FIPSE (Funds for Improvement of Postsecondary Education) Department of Education. Additional funding provided by the Carl and Lily Pforzheim Gannett Foundation.

Copyright 2000 Rochester Institute of Technology

### Rochester Institute of Technology

National Technical Institute for the Deaf

52 Lomb Memorial Drive | Rochester, NY 14623 | Office of Admissions: 585-475-6700 (voice/TTY)

Copyright © 2006 Rochester Institute of Technology. All rights reserved.

[Questions/Comments?](#) | [Terms of Use](#) | [Copyright Infringement](#) | [Site Map](#)